

WOODSIDE ENERGY
JULIMAR-BRUNELLO PHASE 2 / OCEAN APEX
IWOCS SJDF Deployment, North West Shelf

ICON Engineering was engaged by Woodside as part of the Julimar-Brunello Phase 2 project to assist with deploying the Subsea Jumper Deployment Frame (SJDF) through the Ocean Apex moonpool.

Bespoke Engineering, Design, and Installation

This workscope included procurement, installation and hook up of a hydraulic winch for deployment; and design, fabrication, and installation of chutes for the Intervention Workover Control System (IWOCS) umbilical and a Sheave Support Structure (SSS) which cantilevered over the moonpool.



RATs installing the Sheave Support Structure over the moonpool

Rope Access Technicians (RATs) were engaged to assist with installation of the SSS and POD roof reelers.



RATs installing the Sheave Support Structure over the moonpool: Elevation View.

Other modifications included installation of a ‘shark cage’ within the XT Cart which served the triple purpose of assisting landing of the SJDF on the XT cart, deflecting the winch wire and umbilical past the rig’s inboard pontoon, and providing a work platform for clamp fixing.

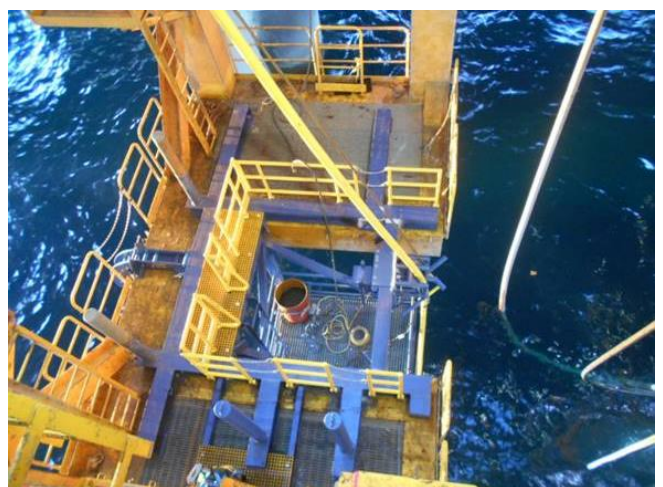
This innovative design was ultra-fast tracked; an 18-day turnaround from concept development to successful offshore installation and load testing.



Blue ‘shark cage’ installation.

The result

This tailored engineered solution made it possible to ‘thread the eye of a needle’ and deploy the SJDF and IWOCS umbilical through the moonpool and safely to the seabed for ROV operations.



Blue ‘shark cage’ deflecting the umbilical and winch wire past the subsea pontoon.